



AI-500/501 INTELLIGENT INDICATING/ ALARM INSTRUMENT Operation Instruction (V9.3)



1.Main Features

- Programmable and modular inputs, supporting multiple input types of thermocouples, RTDs, voltage/ current and two-wire transmitters. Suitable for measuring and displaying temperature, pressure, flow, level, humidity, etc with measurement accuracy of 0.3% full scale.
- Support up to 4 loops of alarms including 2 loops of high limit alarms plus 2 loops of low limit alarms. Alarms can be output to different relays or shared one.
- With functions of digital calibrating, digital filtering, and thermocouple cold junction auto compensating, it is free of maintenance and easy operated.
- Support RS485 communication interface and communicate with upper computer by installing S or S4 module. It is compatible with AI series instruments
- Support the temperature transmission and output with transmission accuracy of 0.5 grade, and adopt current output module X3 with high precision of grade 0.2.
- With "Fever" grade hardware design. Tantalum capacitors or ceramic capacitors are widely used to replace electrolytic capacitors, which provides lower power consumption, higher reliability, stability and wider temperature range than similar products; Both its power supply and I/O terminals have passed the 4KV/5KHz group pulse anti-interference test.
- Universal power supply 100-240VAC/DC or 24VDC is possible. With the protection functions of lightning protection and 10 second protection against misconnection of 380VAC power supply.

2.TECHNICAL SPECIFICATION

- Input type:
Thermocouple: K, S, R, T, E, J, B, N
Resistance thermometer: Pt100, Cu50, Ni120
Linear voltage: 0~5V, 1~5V, 0~100mV, 0~60mV, 0~20mV, 20~100mV
Linear current (should connect an external resistor or install I44, I45 module in MIO slot): 0~20mA, 4~20mA
Linear resistor: 0~80 ohm, 0~400 ohm
- Measurement range:
K(-200~+1300℃), S(-50~+1700℃), R(-50~+1700℃), T(-200~+350℃)
E(0~+800℃), J(0~+1000℃), B(200~+1800℃), N(0~+1300℃), Pt100(-200~+800℃)
- Measurement accuracy: 0.3%FS±1
- Temperature shift: ≤0.015%FS/℃ (typical value is 75ppm/℃)
- Electromagnetic compatibility (EMC): IEC61000-4-4, ±4KV/5KHz; IEC61000-4-5, 4KV
- Retransmission:
When X3 current module is installed in OUP slot, process value (PV) can be retransmitted to standard current with maximum load resistor 500 ohm.
- Alarm function: High limit, low limit, second high limit and second low limit
- Isolation withstanding voltage:
Between power, relay contact or signal terminals ≥2300VDC; between isolated electroweak signal terminals ≥600VDC
- Power supply: 100~240VAC/DC, -15%, +10% / 50-60Hz; 24VDC, -15%, +10%
- Power consumption: ≤5W
- Operating Ambient: Temperature -10~+60℃; humidity ≤90%RH

3. Ordering Code Definition

The ordering code of AI-500/AI-501 is made up of 8 parts, for example:

AI-501 A N X3 L3 N S4 24VDC
① ② ③ ④ ⑤ ⑥ ⑦ ⑧

The meanings of the 8 parts of ordering code are as below:

① Shows the model of instrument:

AI-500 indicating/ alarm instrument with single display with linear voltage inputs

like thermocouple, thermal resistance, mV, 5V etc and measurement accuracy of 0.3% FS.

AI-501 indicating/ alarm instrument with single display with linear voltage inputs like thermocouple, thermal resistance, mV, 5V etc and measurement accuracy of 0.3% FS.

② Shows the front panel dimension:

AI-500	AI-501	Depth Behind (mm)	Front Panel Width×Height (mm)	Cut Out Width×Height (mm)	Light Bar (mm)		
A0	A	72mm	96 × 96 mm	92 ^{+0.5} × 92 ^{+0.5} mm	---		
A10	A1	72mm			25 segments, 4 levels, and 1% resolution		
	A2	72mm					
	A21	72mm					
B0	B	72mm	160 × 80 mm	152 ^{+0.5} × 76 ^{+0.5} mm	---		
B10	B1	72mm			25 segments, 4 levels, and 1% resolution		
	B2	72mm					
	B21	72mm					
C0	C	72mm	80 × 160 mm	76 ^{+0.5} × 152 ^{+0.5} mm	---		
C10	C1	72mm					
D0	D	70mm			72 × 72 mm	68 ^{+0.5} × 68 ^{+0.5} mm	---
D20	D2	95mm			48 × 48 mm	45 ^{+0.5} × 45 ^{+0.5} mm	---
	D61	79mm	48 × 48 mm	46 ^{+0.5} × 46 ^{+0.5} mm	---		
	D7/D71	22.5 × 100mm, DIN rail mount, compact dual LED display, hot-plugged terminals					
E0	E	71mm	48 × 96 mm	45 ^{+0.5} × 92 ^{+0.5} mm	---		
E10	E1	77mm			25 segments, 4 levels, and 1% resolution		
	E2	71mm					
	E21	71mm					
	E5	48 × 96 mm, DIN rail mount.					
F0	F	71mm	96 × 48 mm	92 ^{+0.5} × 45 ^{+0.5} mm	---		
F10	F1	71mm					

③ Shows the module types of multiple input/output (MIO). Selectable modules are as follows:

V24 or V10, 24V or 10V voltage output, available for external transmitters, load cells, etc

I44 expands 4~20mA or 4~20mA linear current input, and includes 24V/25mA power output, which can be directly connected to two-wire transmitter
I45 Analog 4~20mA/0~20mA Input Interface, with 24VDC/25mA power output for two-wire transmitters (occupies the second group of 12V power supply).

④ Shows the module types of main output (OUP):
install X3 current output and other modules as current transmitter outputs

⑤ Shows the module type of alarm output (ALM):
Can output alarms by installing L0, 21, relay output module or L3 dual relay output module.

⑥ Shows the module type of auxiliary output (AUX):
Can output alarms by installing L0, L21, L3 relay output module.

⑦ Shows the module type of communication (COMM):
Installing S, S2 or S4 (standard MODBUS-RTU) for RS485 communication.

⑧ Shows type of power supply:
Null indicates 100~240VAC power supply, and "24VDC" indicates 20~32VDC/AC power.

Note 1: 4~20mA or 0~20mA standard current signal can be inputted by converting to 1~5V/0~5V voltage signal with a 250 ohm resistor or installing I44, I45 module in MIO slot. I44 can supply 24VDC power to 2-wire transmitter.

Note 2: D dimension instruments have no MIO slot, and its COMM and ALM share the same slot and can't be installed at the same time. Its ALM only supports AL1 single loop alarm. D2 dimension instruments have only OUP slot and COMM / AUX slot.

Note 3: Current module X3 and RS485 communication module S share the same power supply in the instrument, and are not electrically isolated to each other. Therefore, if X3 current module is installed in OUP slot and RS485 communication is needed at the same time, then RS485 communication module should be S4 which itself has isolated power supply.

Note 4: The instrument shall be repaired free of charge during the warranty period. Any instrument that needs to be repaired must be clearly stated with the fault phenomenon and reason to ensure correct and comprehensive repair.

4.Front Panel Description

- ① Upper display window, displays PV, or code of a parameter
- ② Lower display window, displays alarming code or parameter value
- ③ Setup key, for accessing parameter tables, and confirming change



- ④ Data shift key
- ⑤ Data decrease key
- ⑥ Date increase key
- ⑦ Indicator lamps: OP1 and OP2 indicate the status of current retransmission. AL1, AL2, AU1 and AU2 indicate the I/O actions of the corresponding modules
Basal display status: When power on, the upper display window of the instrument shows the process value (PV). This status is called basal display status. When the input signal is out of the measurable range (for example, the thermocouple or RTD circuit is break, or input specification sets wrong), the upper display window will alternately display "orAL" and the high limit or the low limit of PV.

5.Parameter Setting

In basal display status, press \odot and hold for about 2 seconds, can access Field Parameter Table. If the parameter lock"Loc" isn't locked (Loc=0), we can modify the value of parameters by \triangleleft / \triangleright or \triangle . Press ∇ key to decrease the value, \triangle key to increase the value, and \triangleleft key to move to the digit expected to modify. Keep pressing \triangle or \triangleright , the speed of increasing or decreasing value get quick. Pressing \odot can go to the next parameter. Press \triangleleft and hold can return to the preceding parameter. Press \triangleleft (don't release) and then press \odot simultaneously can escape from the parameter table. The instrument will escape automatically from the parameter table if no key is pressed within 30 seconds. Setting Loc=808 and then press can access System Parameter Table.

When the parameters editing is done, press and hold \odot key until the display status quits from parameter editing. The parameters will be saved.

5.1The Parameter Table

Code	Name	Description	Setting Range
HIAL	High limit alarm	Alarm on when PV(Process Value)>HIAL; Alarm off when PV<HIAL-AHYS	-9990~+30000 units
LoAL	Low limit alarm	Alarm on when PV<LoAL; alarm off when PV>LoAL+AHYS	
HdAL	Second high limit alarm	Alarm on when PV>HdAL; alarm off when PV<HdAL-AHYS	
LdAL	Second Low limit alarm	Alarm on when PV<LdAL; alarm off when PV>LdAL+AHYS	
Loc	Parameter lock	Loc=0, it is allowed to modify the given value and field parameters; Loc=1, it is allowed to modify the given value, and it is prohibited to modify the field parameters; Loc=2~3, it is forbidden to modify the given value, and it is allowed to modify the field parameters; Loc=4~255 It is not allowed to modify any parameter other than Loc. Set Loc=808 and press OK to enter the system parameter table	0~9999

5.2 System parameter table (set Loc=808 and then press \odot to access)

Code	Name	Description	Setting Range																														
AHYS	Alarm hysteresis	Avoid frequent alarm on-off action because of the fluctuation of PV. For temperature alarm, it is recommended to be 0.5~2℃.	0~09999																														
AoP	Alarm output allocation	<table border="1"> <tr> <td>Alarm Output to</td> <td>LdAL (x1000)</td> <td>HdAL (x100)</td> <td>LoAL (x10)</td> <td>HIAL (x1)</td> </tr> <tr> <td>None</td> <td>0</td> <td>0</td> <td>0</td> <td>0</td> </tr> <tr> <td>AL1</td> <td>1</td> <td>1</td> <td>1</td> <td>1</td> </tr> <tr> <td>AL2</td> <td>2</td> <td>2</td> <td>2</td> <td>2</td> </tr> <tr> <td>AU1</td> <td>3</td> <td>3</td> <td>3</td> <td>3</td> </tr> <tr> <td>AU2</td> <td>4</td> <td>4</td> <td>4</td> <td>4</td> </tr> </table> <p>Example: AOP = $\frac{3}{LdAL}$ $\frac{3}{HdAL}$ $\frac{0}{LoAL}$ $\frac{1}{HIAL}$; shows that HdAL and LdAL are sent to AU1, LoAL has no output, HIAL is sent to AL1. Note: Installing L5 dual relay output module in ALM or AUX can implement AL2 or AU2 alarm.</p>	Alarm Output to	LdAL (x1000)	HdAL (x100)	LoAL (x10)	HIAL (x1)	None	0	0	0	0	AL1	1	1	1	1	AL2	2	2	2	2	AU1	3	3	3	3	AU2	4	4	4	4	0~9999
Alarm Output to	LdAL (x1000)	HdAL (x100)	LoAL (x10)	HIAL (x1)																													
None	0	0	0	0																													
AL1	1	1	1	1																													
AL2	2	2	2	2																													
AU1	3	3	3	3																													
AU2	4	4	4	4																													

INP	Input specification Code	Code	Value	Description	Setting Range
		0	K	Pt100	
		1	S	Pt100 (-80~+300.00℃)	
		2	R	0~75mV voltage input	
		3	T	0~400ohm resistor input	
		4	E	0~20mV voltage input	
		5	J	0~60mV voltage input	
		6	B	0~1V	
		7	N	0.2~1V	
		8	WR3-WRe25	1~5V voltage input	
		9	WR5-WRe26	0~5V voltage input	
		10	User-defined	-20~+20mV	
		12	F2 radiation high-temperature thermometer	-5V~+5V	
		13	T (0~300.00℃)	10~50V voltage input	
		15	MIO input 1 (Install I44, I45 for 4-20mA)	15~75mV Voltage Input 4~20mA Current Input (Limited to D61, J4 Input Must Be Specified)	
		16	MIO input 2 (Install I44, I45 for 0-20mA)		
		17	K (0~300.00℃)	0~10V voltage input	
		18	J (0~300.00℃)	2~10V voltage input	
		19	Ni120	-10V~+10V voltage input	
		20	Cu50		

dPt	Radix point position	Value	Description	Setting Range
		Four formats (0, 0.0, 0.00, 0.000) are selectable. For thermocouples or RTD inputs, only 0 and 0.0 are selectable, if use thermocouple type S, it's better select 0; Inp=17, 18, 22, the internal resolution is 0.01, 0.0 and 0.00 are selectable. For linear input, if the value of PV or any parameter is probably greater than 9999, format 0.000 is recommended, when value is greater than 9999, the display format will be 00.00.		
SCL	Signal scale low limit	Define scale low limit of input signal. It is also the scale of the low limit of retransmission output. For example, to transform 1~5V input signal into process value of 0~200.0, we shall set dPt=0.0, SCL=0, SCH=200.0		-9990~+30000
SCH	Signal scale high limit	Define scale high limit of input signal. It is also the scale of the high limit of retransmission output. For example, to transform 0~5V input signal into process value of 1000~2000, we shall set dPt=0, SCL=1000, SCH=2000.		
Scb	Input shift adjustment	Scb is used to compensate the error produced by sensor or input signal. PV_after_compensation = PV_before_compensation + Scb. For example, for same input signal, if measured temperature PV is 500.0℃ when Scb=10.0, then PV should be 510.0℃.		-9990~+4000
FILt	Input filter	FILt determines the strength of digital filtering. A higher setting provides stronger filtering but slower response speed of measured data. When the measurement is subject to severe interference, gradually increase FILt until the displayed value becomes stable. For metrological verification of the instrument, set FILt to 0 or 1 to improve the response speed.		0~9999
Ctrl	Control mode (only for AI-501)	POP, transmit PV; SOP, transmit SV, SV can be -9990~+30000. When Ctrl=SOP, lower window shows transmit value and can be modified.		
CTI	Control Cycle	CTI Affects Sampling Period: The Smaller the Value Below 2.0, the Faster the Sampling		0.1~300.0
OPt	Output Type	0-20: 0~20mA linear current retransmission output; 4-20: 4~20mA linear current retransmission output.		

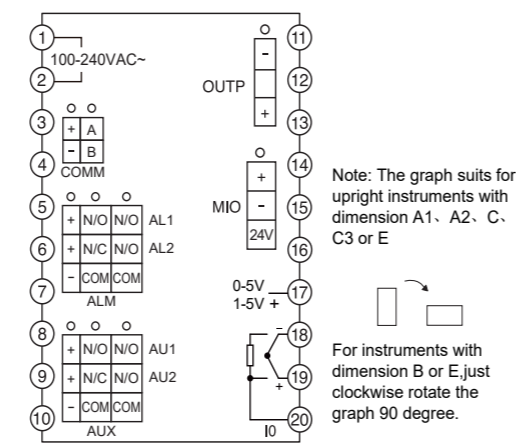
SPL	Lower Limit for SV(only for AI-501)	Minimum value allowed for SV setting.	-9990~ +30000
SPH	Upper Limit for SV(only for AI-501)	Maximum value allowed for SV setting.	
SPSL	Lower limit of transmission output scale	When used to define the current transmission output, it is the defined value of the output lower limit scale.	
SPSH	Upper limit of transmission output scale	When used to define the current transmission output, it is the defined value of the output upper limit scale.	
AF	Advanced function	<p>AF is used to select advanced function. The value of AF is calculated as below:</p> $AF=A \times 1+B \times 2+C \times 4+D \times 8+E \times 16+F \times 32$ <p>A=0, HdAL and LdAL work as deviation alarms; A=1, HdAL and LdAL work as high and low limit alarms, and the instrument can have two groups of high and low limit alarms. B=0, Alarm and control hysteresis work as unilateral hysteresis; B=1, As bilateral hysteresis C=0, the third row of the meter displays with 1 decimal point; C=1, the third row of the meter does not display a decimal point (only available for three-row display). D=0, the password to enter the parameter table is the public 808; D=1, the password is the parameter PASd value. E=0, HIAL and LOAL work as high and low limit alarms respectively; E=1, HIAL and LOAL will become to deviation high alarm and Deviation low alarm, and the instrument can have four groups of deviation alarms. F=0, fine control mode, the internal control resolution is 10 times that of the display, but its maximum display value is 3200 units during linear input; F=1 is high-resolution display mode, select this mode when the display value is required to be greater than 3200</p>	0~255
AFC	Communication Mode	<p>AFC is used to select communication mode. The value of AFC is calculated as below:</p> $AFC=A \times 1+D \times 8+G \times 64$ <p>A=0, Standard MODBUS Protocol; A=1, AIBUS Protocol; A=2, MODBUS compatible Protocol; A=4, compatible protocol with S6 module. D=0, no parity check; D=1, even parity. G=0, default; G=1, AUX does event input. Note: Under the Modbus protocol, the AFC setting supports two function codes: 03H (Read Parameters and Data) and 06H (Write Single Parameter). When AFC = 0 or 4, the 03H command can read a maximum of 20 words of data at a time; When AFC = 2, the data read by the 03H command is fixed at 4 words. Refer to the communication protocol specification for details.</p>	0~255
Addr	Communication address	Each instrument should be assigned a unique address in one RS485 communication line.	0~99

bAud	Baud rate	<p>The parameter TbAud defines the communication baud rate. Values from 2400 to 28800 correspond to actual baud rates of 2400~28800 bit/s. When displayed via a 4-digit digital tube, the value shall be increased above 9999; for example, the final display of 19.20 represents 19200 bit/s. 384 stands for 38400 bit/s, 576 for 57600 bit/s, and 1152 for 115200 bit/s. When the COM port is not used for communication functions, the bAud parameter can be set to utilize the COM port for other purposes: bAud=0: Configures the COM port for 0-20mA measurement transmission output. bAud=1: Configures the COM port as an external digital input, similar to the MIO position. If the MIO position is occupied, the I2 module can be installed in the COMM position. bAud=2: Configures the COMM/AUX port for AU1+AL1 output, suitable for D2-sized meters requiring event outputs (requires installation of L3 module). bAud=3: Configures the COMM/AUX port for AUX use, suitable for D2-sized meters. bAud=4: Configures the COMM port for 4-20mA measurement transmission output. bAud=8: Configures the COMM port for 0-20mA setpoint transmission output. bAud=12: Configures the COMM port for 4-20mA setpoint transmission output.</p>	0~28.8K
------	-----------	--	---------

6.Rear Terminal Layout and Wiring

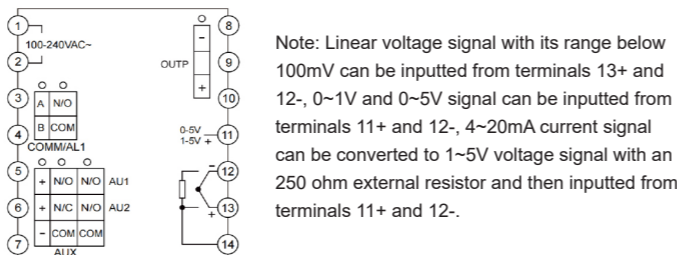
The compensation wires for different kinds of thermocouple are different, and should be directly connect to the terminals. Connecting the common wire between the compensation wire and the terminals will cause measurement error.

Wiring graph for instrument with dimensions A, A2, B, C, C3, E, F, A1, A10, B1, B10, C1, C10, E1, E10, F1, F10

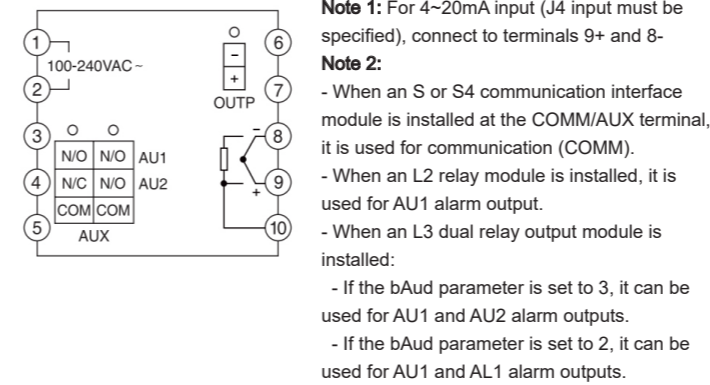


Note: Linear voltage signal with its range below 100mV can be inputted from terminals 19+ and 18-, 0~1V and 0~5V signal can be inputted from terminals 17+ and 18-, 4~20mA current signal can be converted to voltage signal with an 250 ohm external resistor and then inputted from terminals 17+ and 18-. If I44, I45 module is installed in MIO slot, current signal can also be inputted from terminals 14+ and 15-, and 2-wire transmitter can be inputted from terminals 16+ and 14-.

Wiring graph for dimension D (72X72mm)instruments:

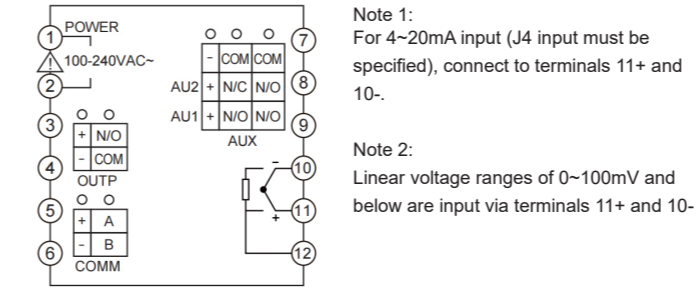


Wiring graph for D2 dimensio (48mmX48mm) instruments



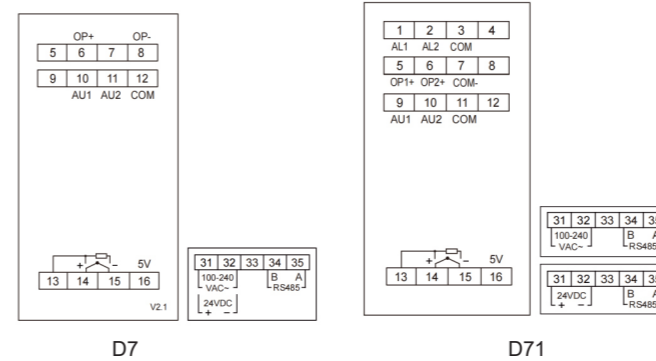
Note 1: For 4~20mA input (J4 input must be specified), connect to terminals 9+ and 8-
Note 2:
- When an S or S4 communication interface module is installed at the COMM/AUX terminal, it is used for communication (COMM).
- When an L2 relay module is installed, it is used for AU1 alarm output.
- When an L3 dual relay output module is installed:
- If the bAud parameter is set to 3, it can be used for AU1 and AU2 alarm outputs.
- If the bAud parameter is set to 2, it can be used for AU1 and AL1 alarm outputs.

Wiring graph for D61 dimensio (48mmX48mm) instruments



Note 1:
For 4~20mA input (J4 input must be specified), connect to terminals 11+ and 10-.
Note 2:
Linear voltage ranges of 0~100mV and below are input via terminals 11+ and 10-.

Wiring graph for D7/D71 dimensio (22.5mmX100mm) instruments



Note 1: Input 0~5V/1~5V input from 15-, 16+. 100mV below input from 14+, 15- 4~20mA with 250ohm shunt resistor converted to 1~5V, input from 15-, 16+